



# The Human Eye

Ophthalmology is the study of anatomy, illnesses and disorders of the eye. Check out the exhibit to learn about the history of eye care!

Who offered "eye care" in the Middle Ages?

.....

Label the structure of the eye!  
(Need help? Check out the diagram.)

1 .....

2 .....

3 .....

4 .....

5 .....

10

9

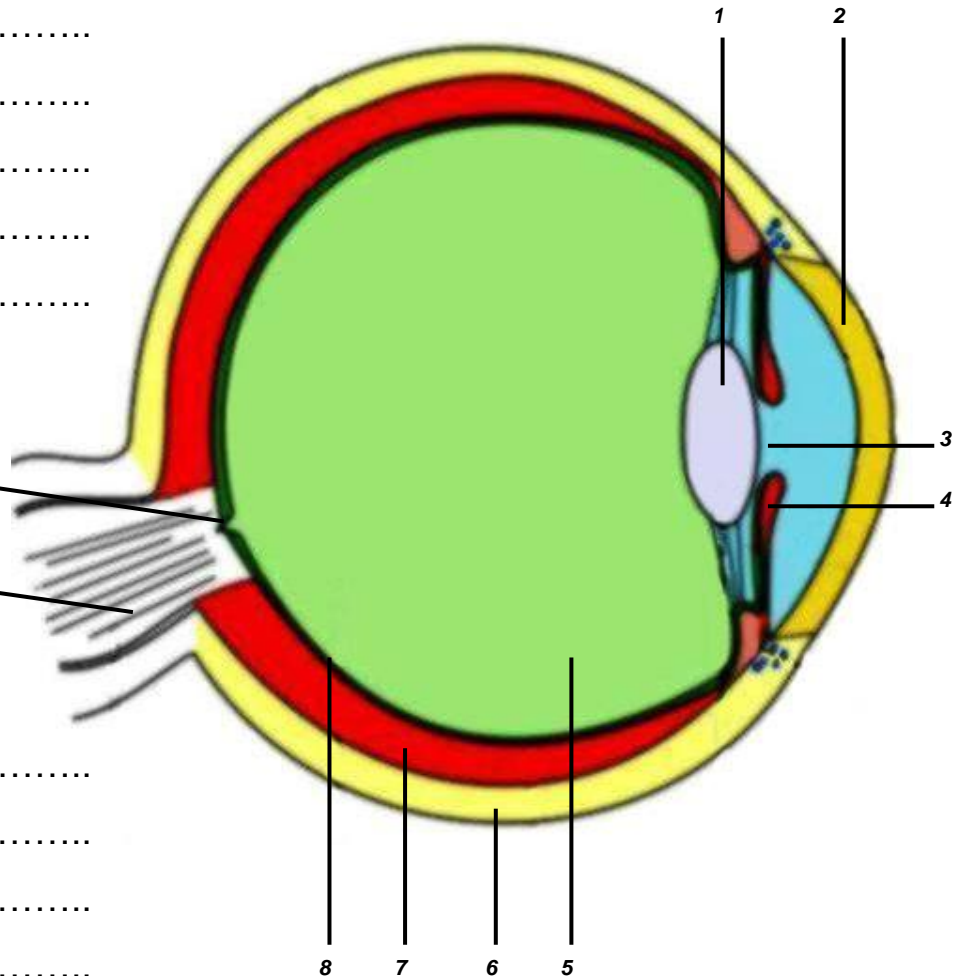
6 .....

7 .....

8 .....

9 .....

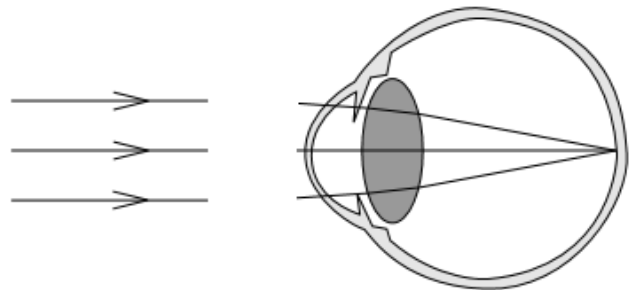
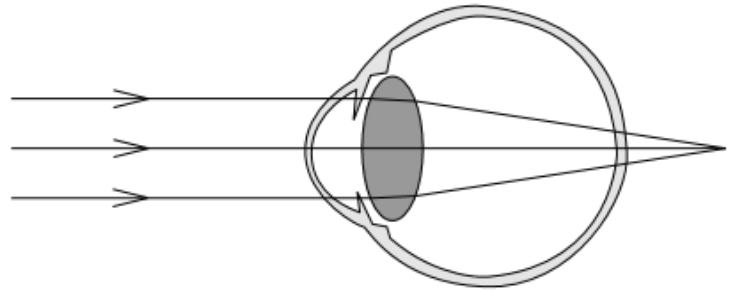
10 .....



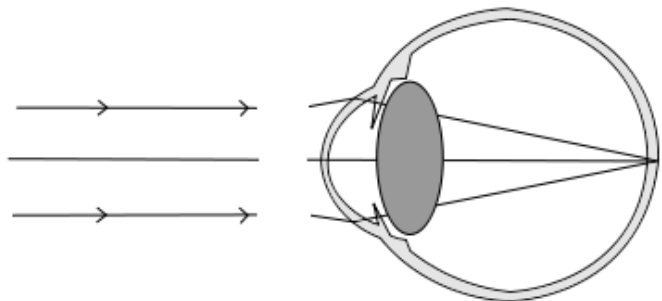
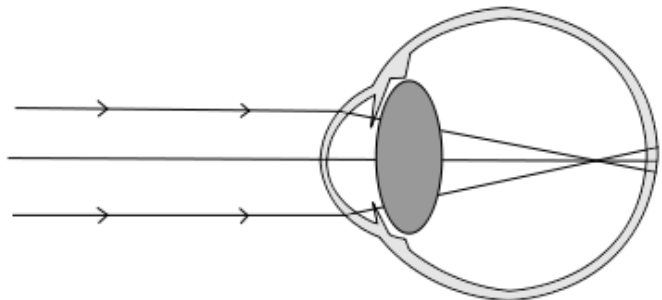
About 80% of all information about our environment, we detect via our eyes!

Defective vision can be corrected by placing an optical lens between the eye and the object, i.e. with a pair of glasses. The lens corrects the refractive power of the eye. The type of lens used depends on the visual defect. Draw the correct lens shape in the following diagrams!

**Presbyopia (age-related inability to focus on up-close objects) or hyperopia (farsightedness)**  
 If the lens is not sufficiently elastic, then the image is formed behind the retina.  
 Objects appear blurry.



**Myopia (shortsightedness)**  
 If the lens is not formed normally and the eyeball is too long, then objects in the distance appear blurry. The image is formed in front of the retina.



Test your eyesight at the different stations in the room! Write down your results!

.....

.....

.....